



GUILDFORD  
BOROUGH

[www.guildford.gov.uk](http://www.guildford.gov.uk)

**Tom Horwood**  
Joint Chief Executive of Guildford and  
Waverley Borough Councils

Dear Councillor

**PLANNING COMMITTEE - WEDNESDAY 1 MARCH 2023**

Please find attached the following:

**Agenda No    Item**

10.    **Presentations (Pages 1 - 62)**

Yours sincerely

Sophie Butcher, Democratic Services Officer

Encs

This page is intentionally left blank

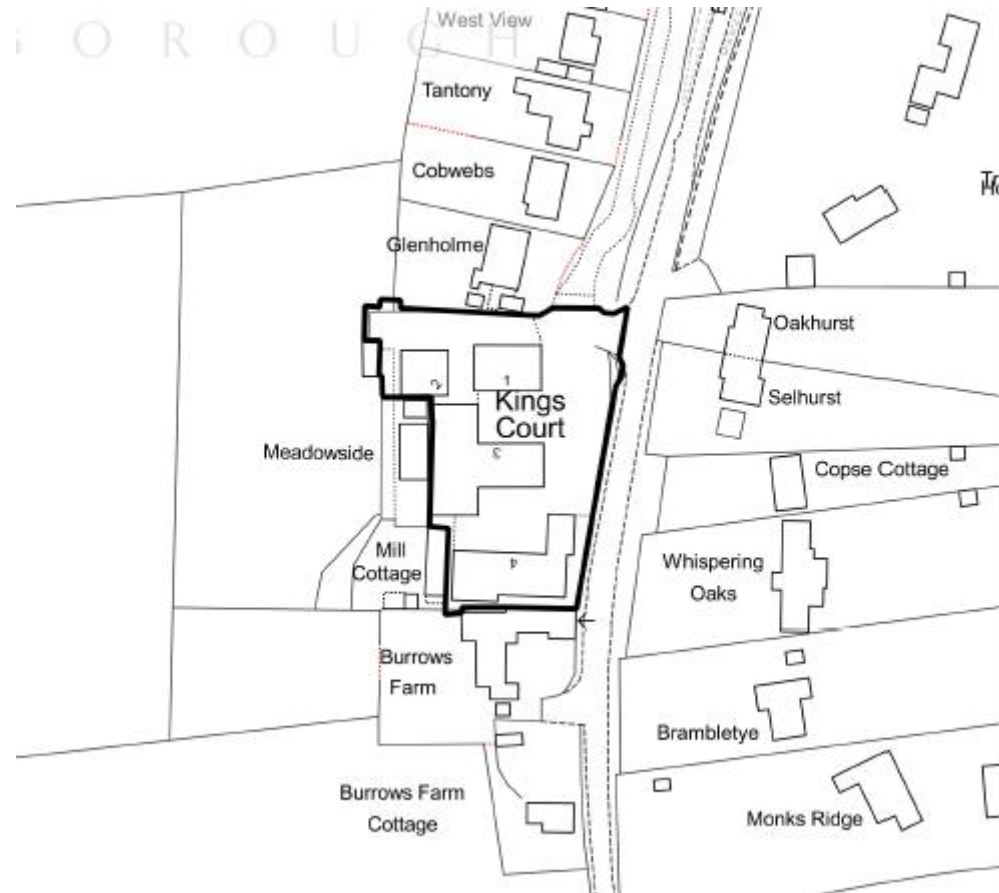
**21/P/02589**

**Unit 3  
Kings Court  
Burrows Lane  
Gomshall  
Shere**

[Previous](#)

[Next](#)

[Home](#)

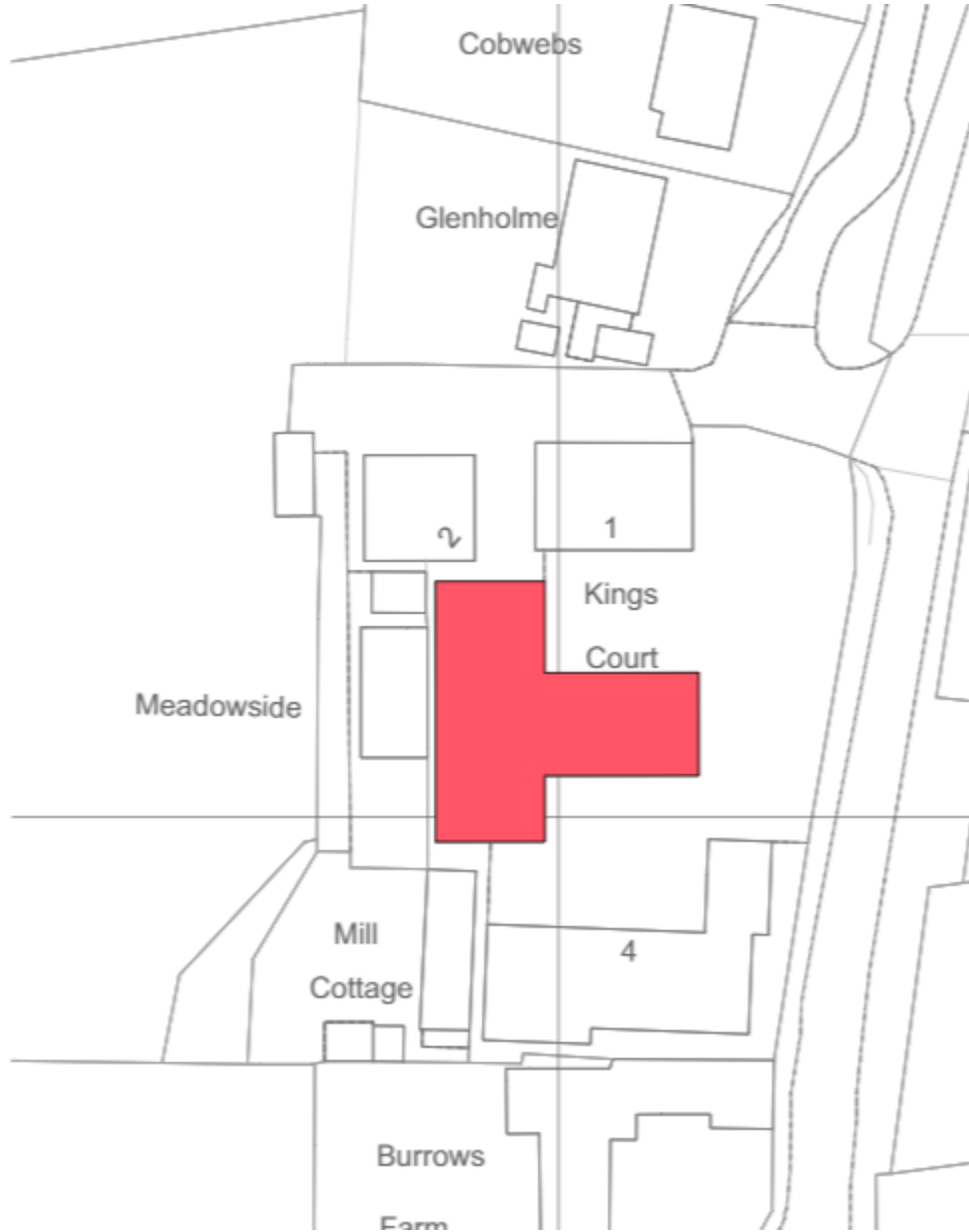


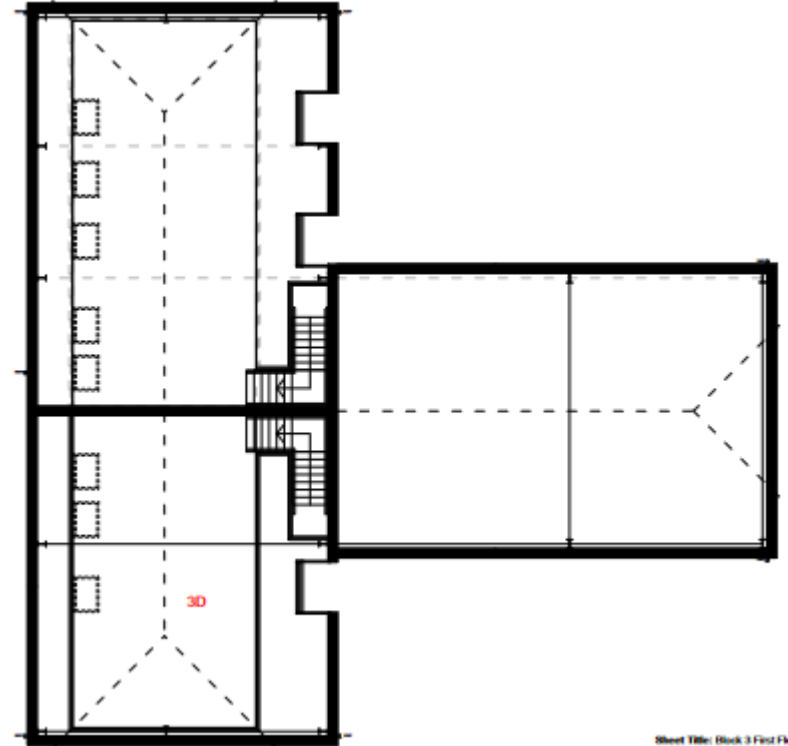
Location plan

[Previous](#)

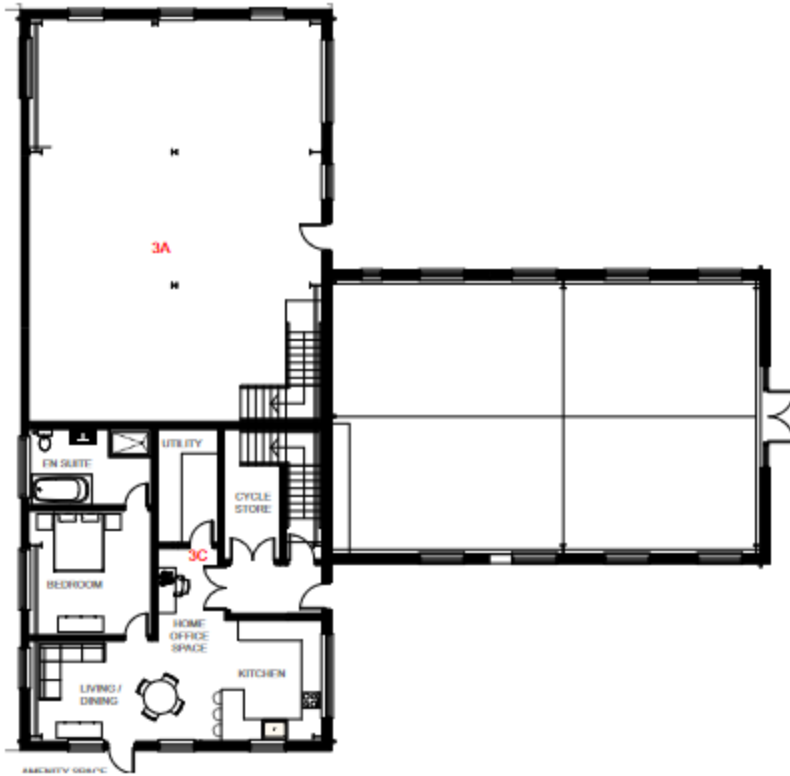
[Next](#)

[Home](#)





Sheet Title: Block 3 First Flr  
Project: 1-10-10

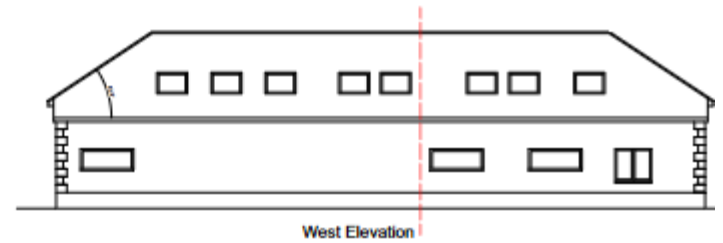
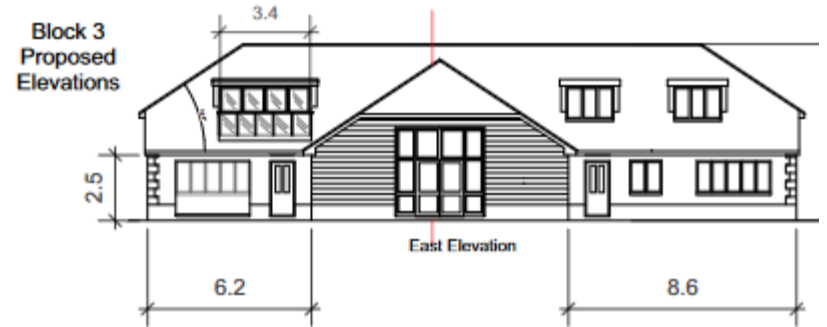
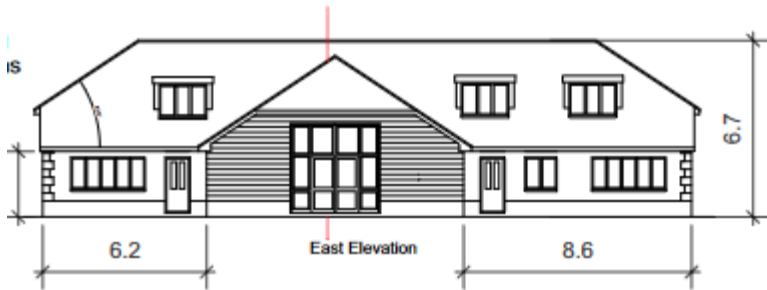


Proposed ground and first floor plans

[Previous](#)

[Next](#)

[Home](#)



[Previous](#)

[Next](#)

[Home](#)



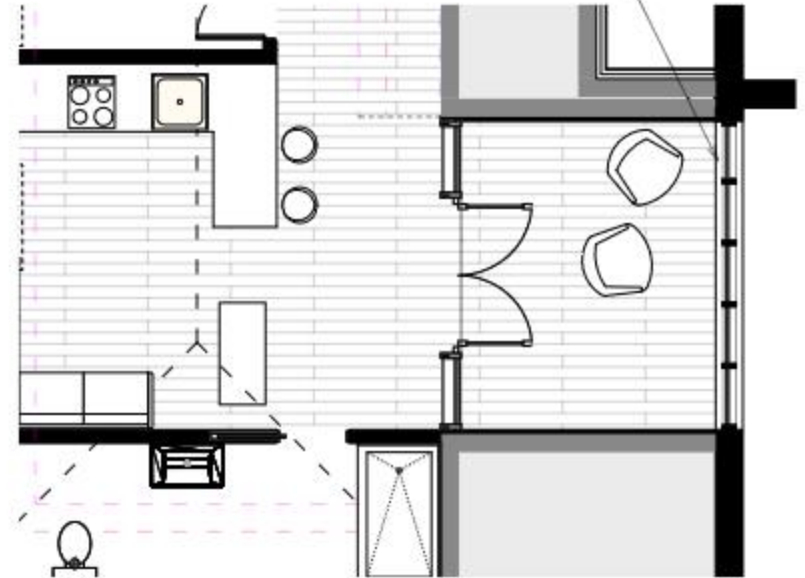
Inset Amenity Space



Glass Balustrade  
Reference for  
Amenity Space



Glass Balustrade



[Previous](#)

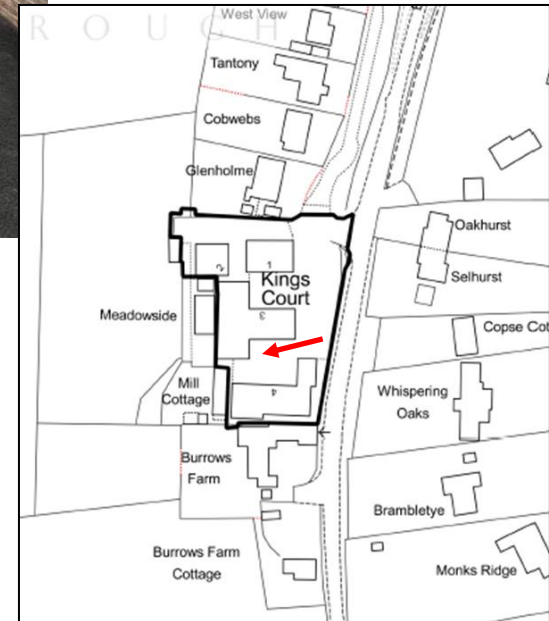
[Next](#)

[Home](#)



Parking Space to have Electric Charging Point

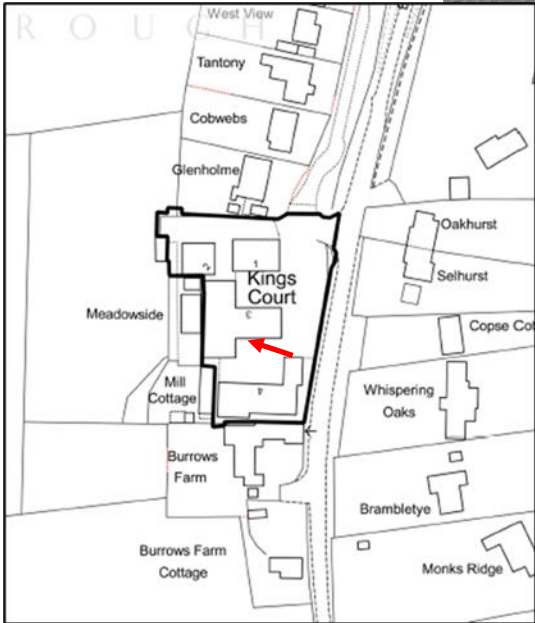




[Previous](#)

[Next](#)

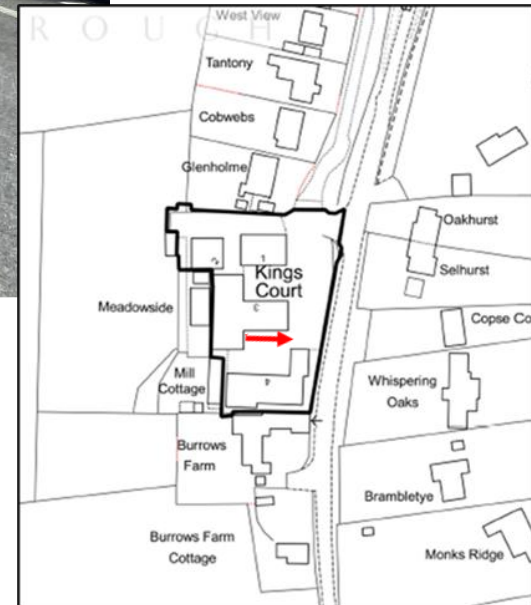
[Home](#)



[Previous](#)

[Next](#)

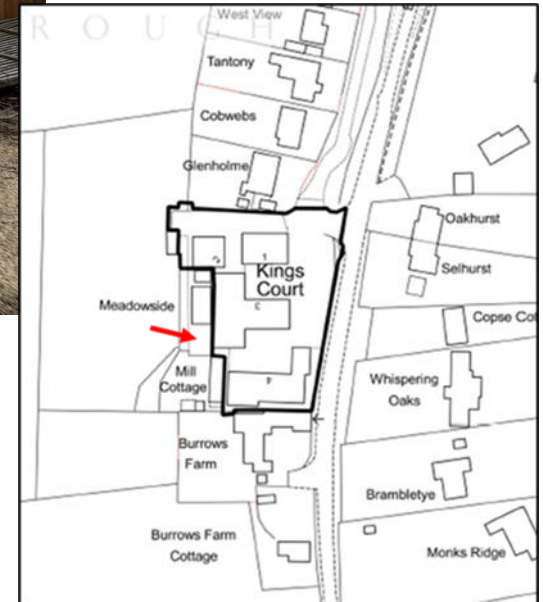
[Home](#)



[Previous](#)

[Next](#)

[Home](#)



[Previous](#)

[Next](#)

[Home](#)

[Previous](#)

[Next](#)

[Home](#)



[Previous](#)

[Next](#)

[Home](#)

[Previous](#)

[Next](#)

[Home](#)

**22/P/00738**

**Ipsley Lodge Stables**

**Hogs Back**

**Seale**

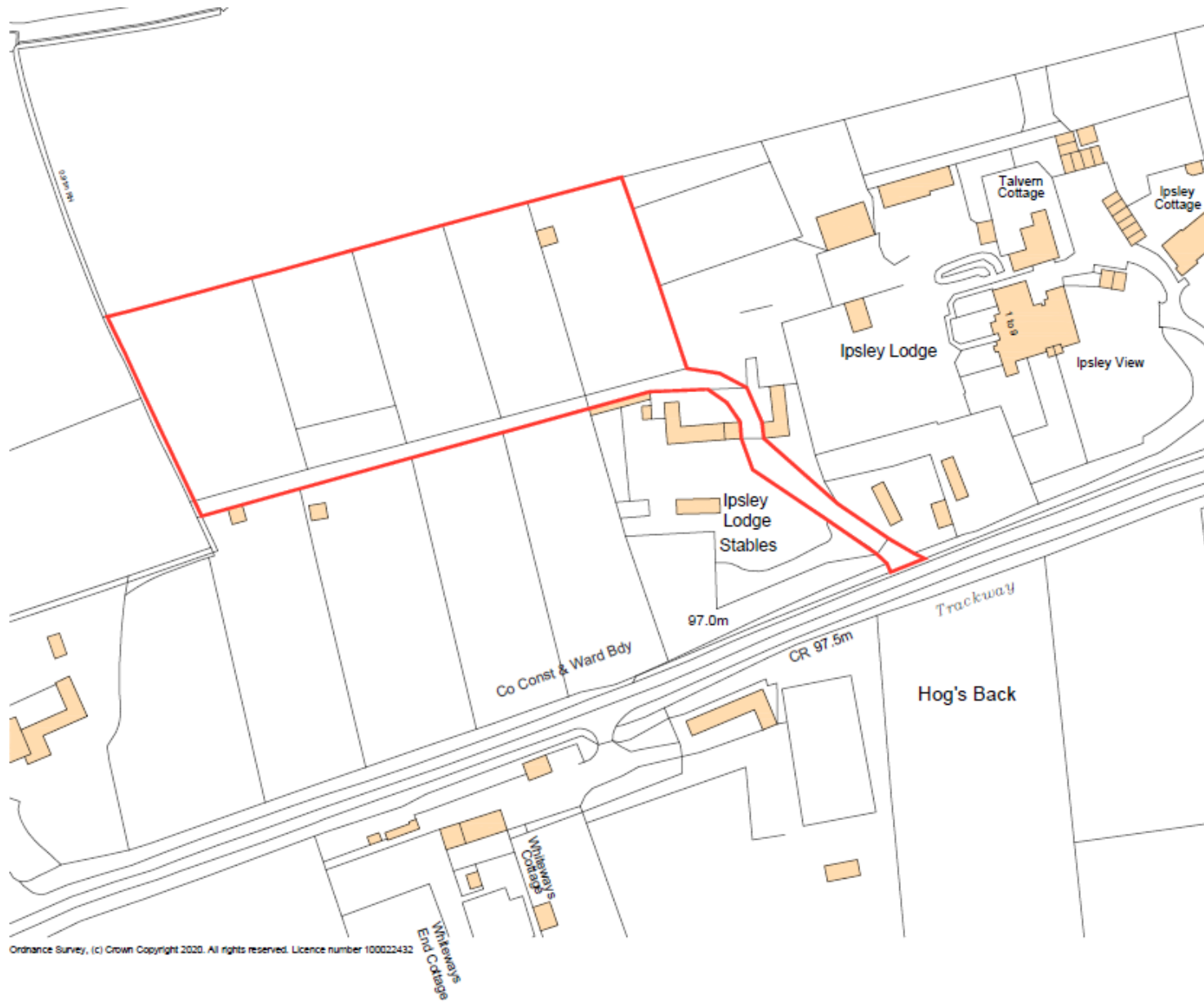
**Guildford**

**GU10 1LA**

[Previous](#)

[Next](#)

[Home](#)



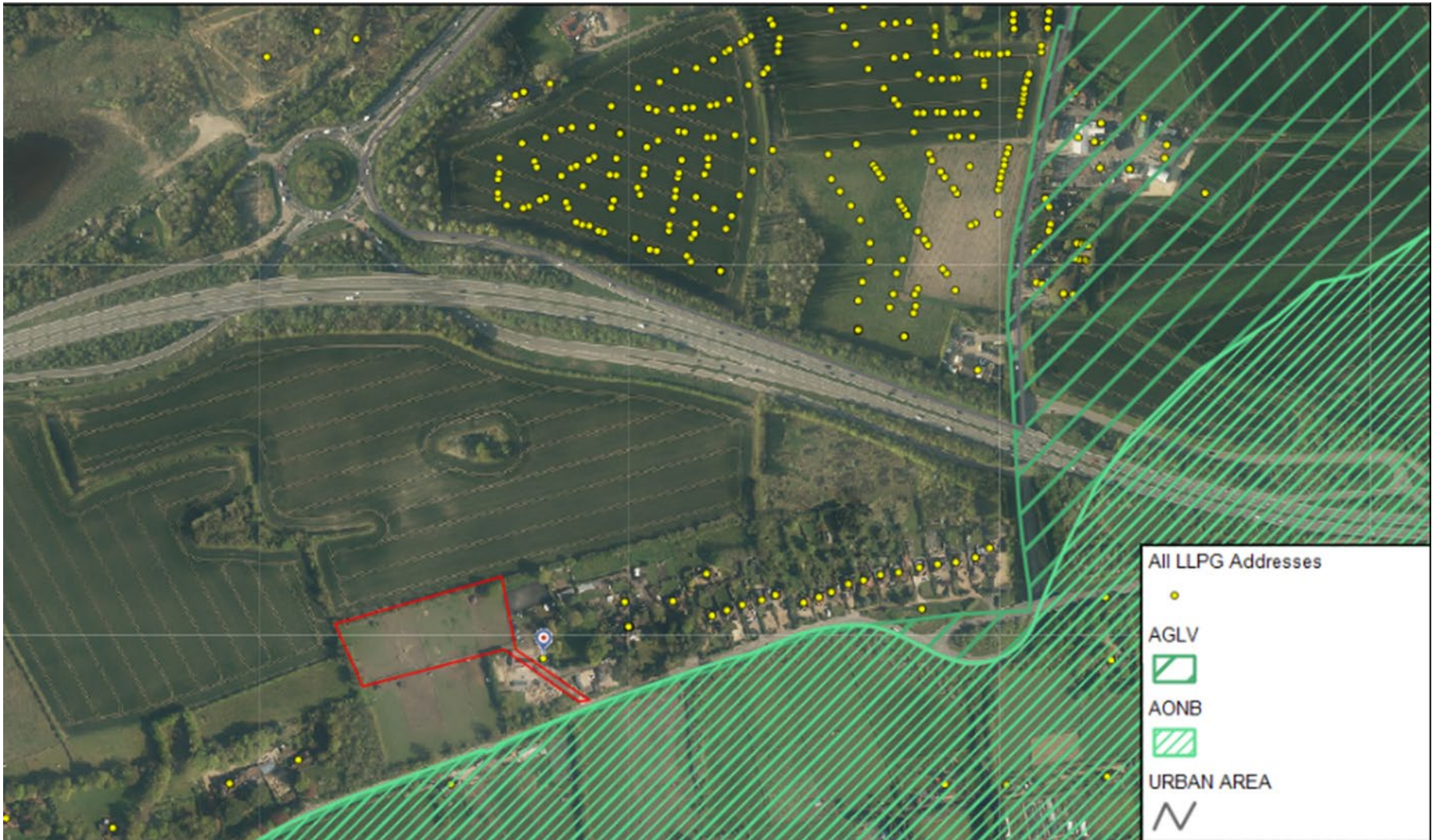
Site Location

[Previous](#)

[Next](#)

[Home](#)



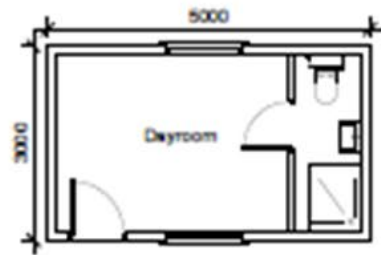
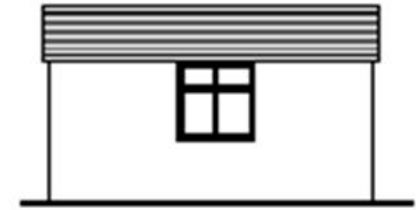
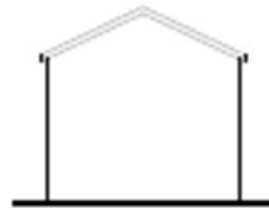
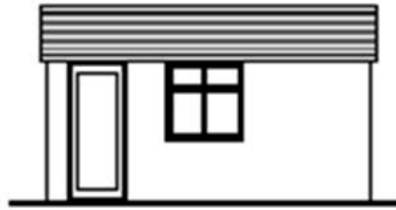
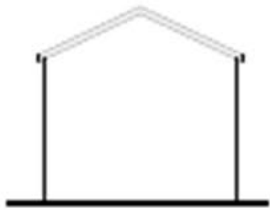


Aerial view

Previous

Next

Home





[Previous](#)

[Next](#)

[Home](#)

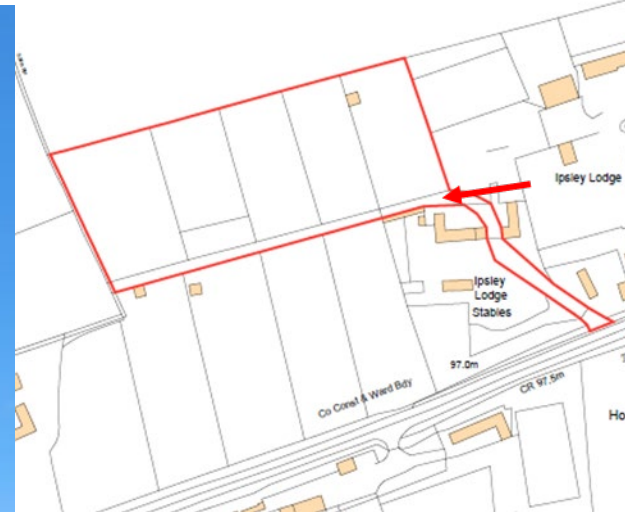




[Previous](#)

[Next](#)

[Home](#)



[Previous](#)

[Next](#)

[Home](#)



[Previous](#)

[Next](#)

[Home](#)



[Previous](#)

[Next](#)

[Home](#)



[Previous](#)

[Next](#)

[Home](#)



[Previous](#)

[Next](#)

[Home](#)



[Previous](#)

[Next](#)

[Home](#)



[Previous](#)

[Next](#)

[Home](#)





[Previous](#)

[Next](#)

[Home](#)



**22/P/00998**

**Land to the rear of  
168 The Street  
West Horsley**

Erection of a detached Self-build / Custom Build dwelling with associated garaging and new access on land to the rear of Dytchleys, 168 The Street

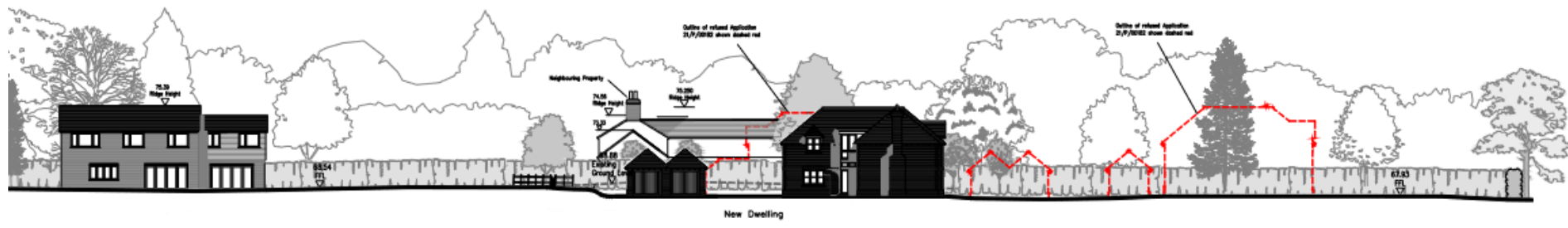
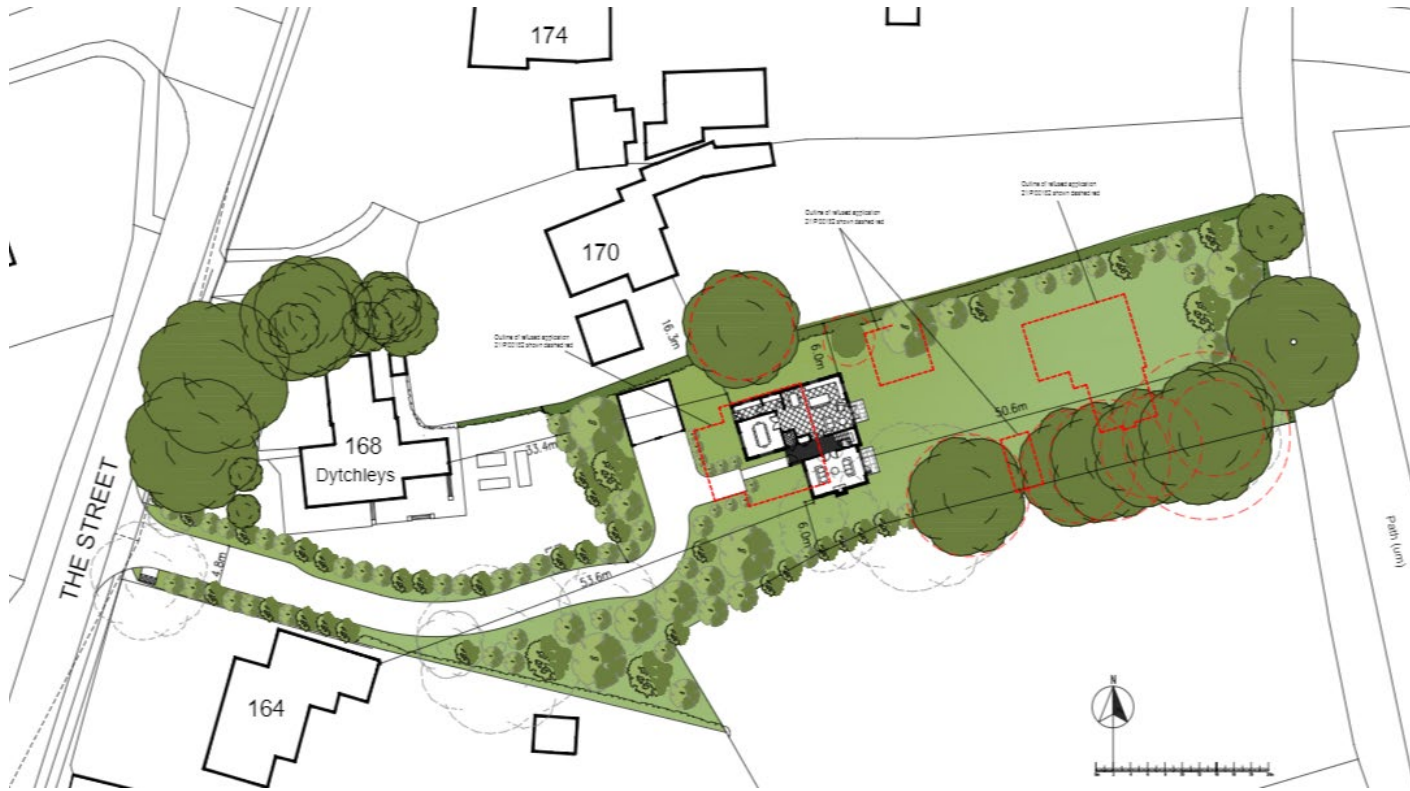
[Previous](#)

[Next](#)

[Home](#)



Reference	Description	Decision	Appeal
21/P/00182	Proposed erection of a pair of two storey semi-detached dwellings and one two storey detached dwelling, with associated garaging and new access.	Refuse 22/11/2021	Appeal withdrawn 27/09/2022
20/P/01194	Erection of two detached dwellings	Withdrawn 17/12/2020	N/A



Block plan

Previous

Next

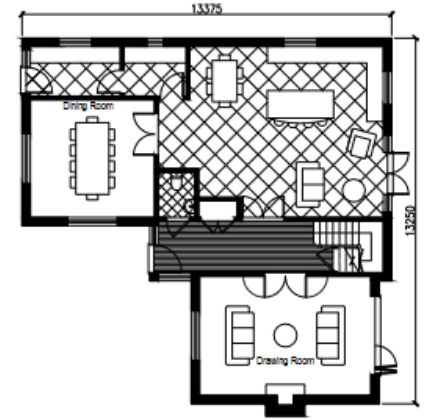
Home



PROPOSED FRONT (WEST) ELEVATION  
SCALE 1:100



PROPOSED SIDE (NORTH) ELEVATION  
SCALE 1:100



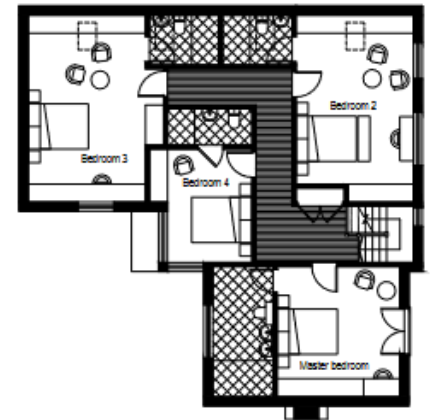
PROPOSED GROUND FLOOR PLAN  
SCALE 1:100



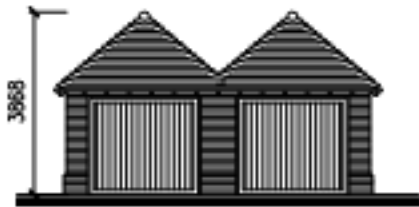
PROPOSED REAR (EAST) ELEVATION  
SCALE 1:100



PROPOSED SIDE (SOUTH) ELEVATION  
SCALE 1:100



PROPOSED FIRST FLOOR PLAN  
SCALE 1:100



**GARAGE FRONT  
(SOUTH) ELEVATION  
SCALE 1:100**



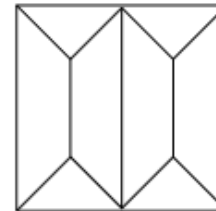
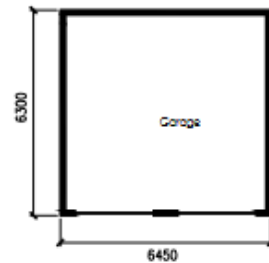
**GARAGE REAR  
(NORTH) ELEVATION  
SCALE 1:100**



**GARAGE SIDE  
(EAST) ELEVATION  
SCALE 1:100**

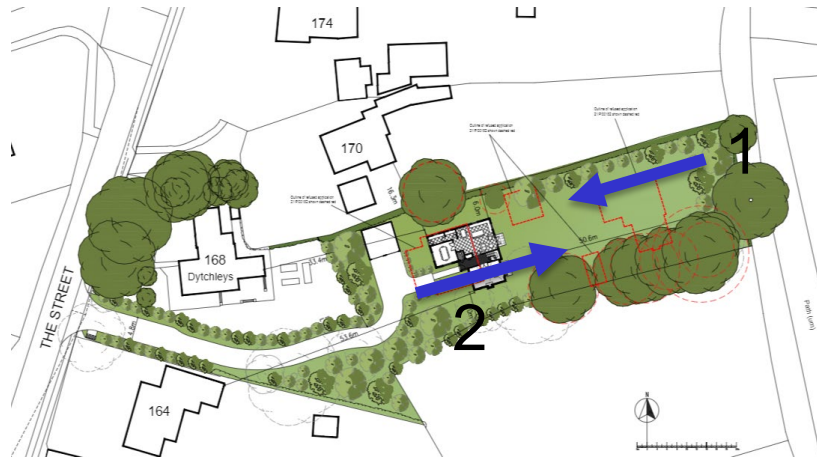


**GARAGE SIDE  
(WEST) ELEVATION  
SCALE 1:100**



**GARAGE FLOOR AND ROOF PLANS  
SCALE 1:100**





1

2

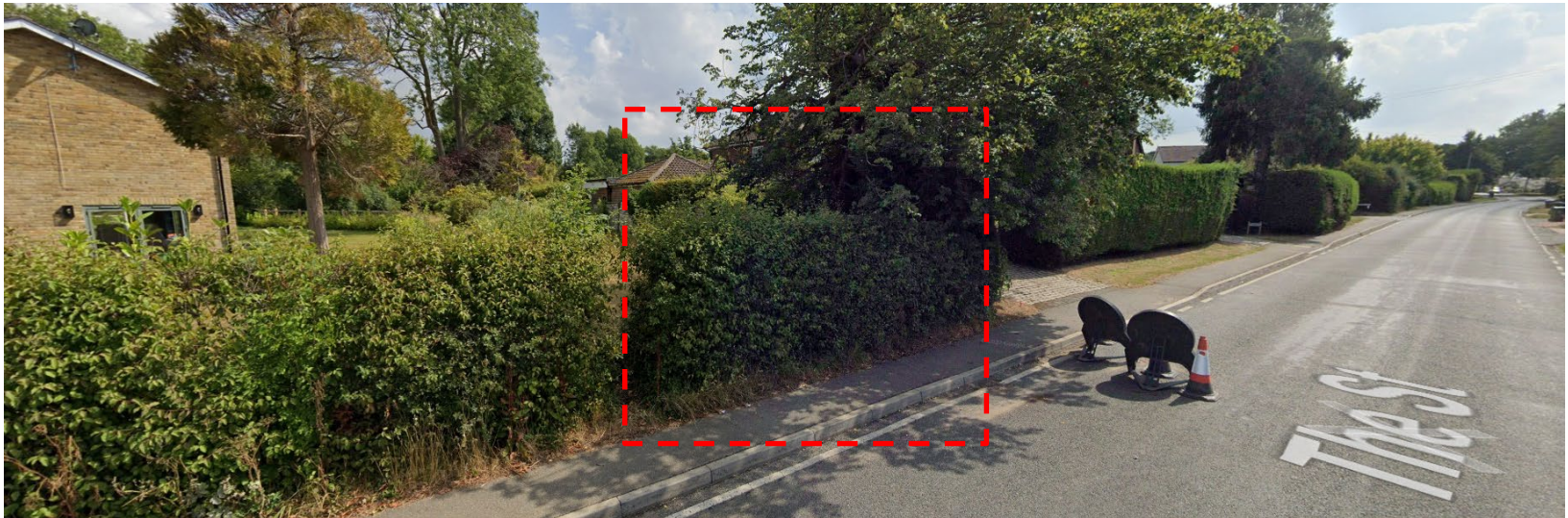
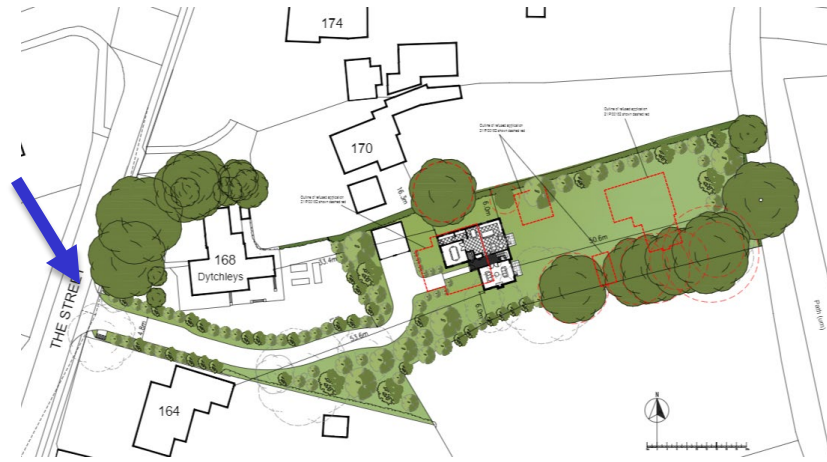


Photographs (within the site)

Previous

Next

Home

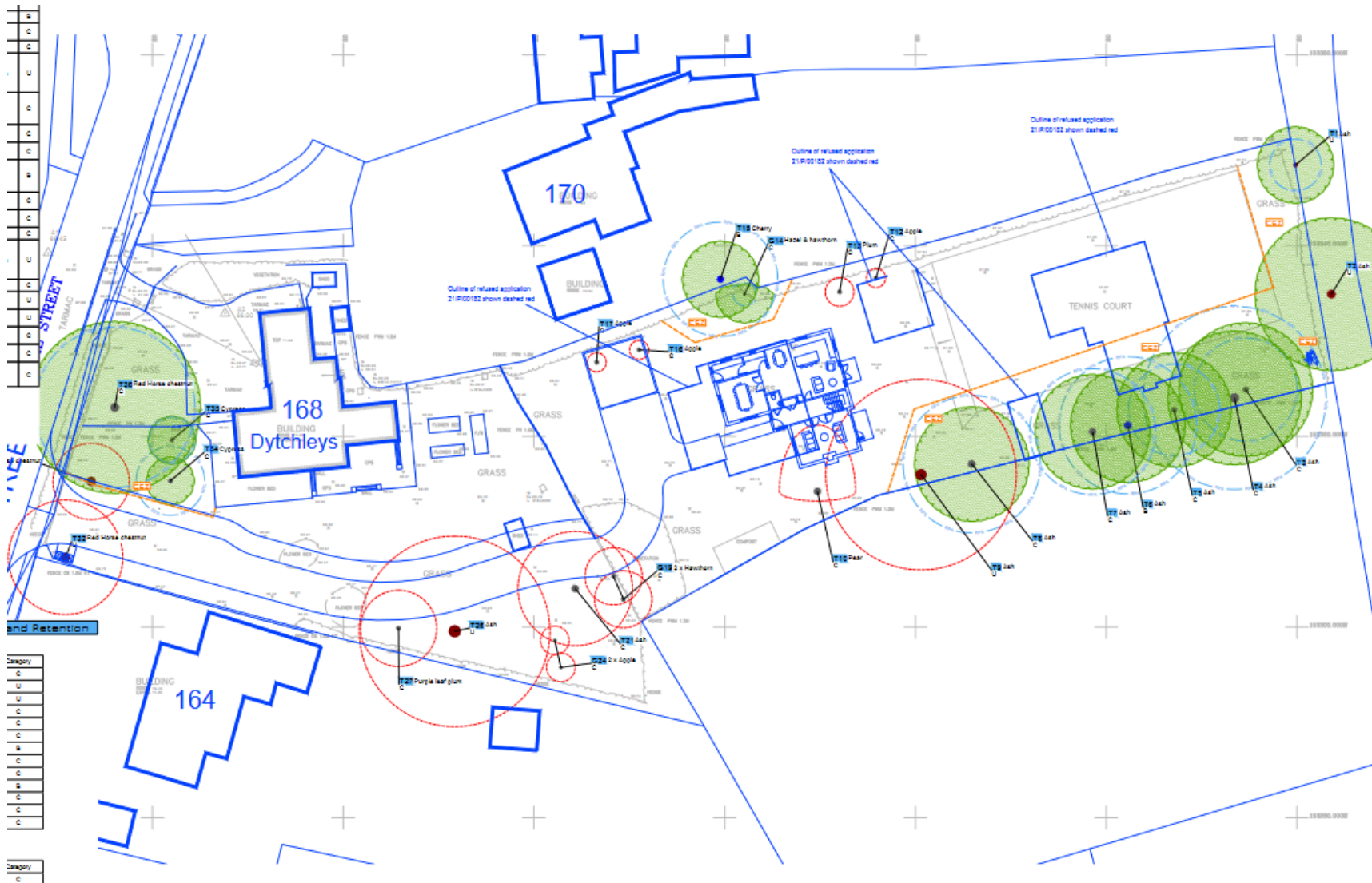


Photographs (proposed access)

[Previous](#)

[Next](#)

[Home](#)



Trees

Previous

Next

Home

- Biodiversity enhancements suggested (mixed native hedgerow planting, insect hotel etc) would be secured through condition, if approved
- Site is within Floodzone 1 and considered at very low risk from surface water flooding
- Sustainability measures suggested would be secured through condition, if approved
- S106 drafted for SANG and SAMM mitigation payments and applicant has agreed to this

**22/P/01050**

**Weyside Urban Village  
(Slyfield Regeneration Programme)  
Slyfield Green  
Guildford**

[Previous](#)

[Next](#)

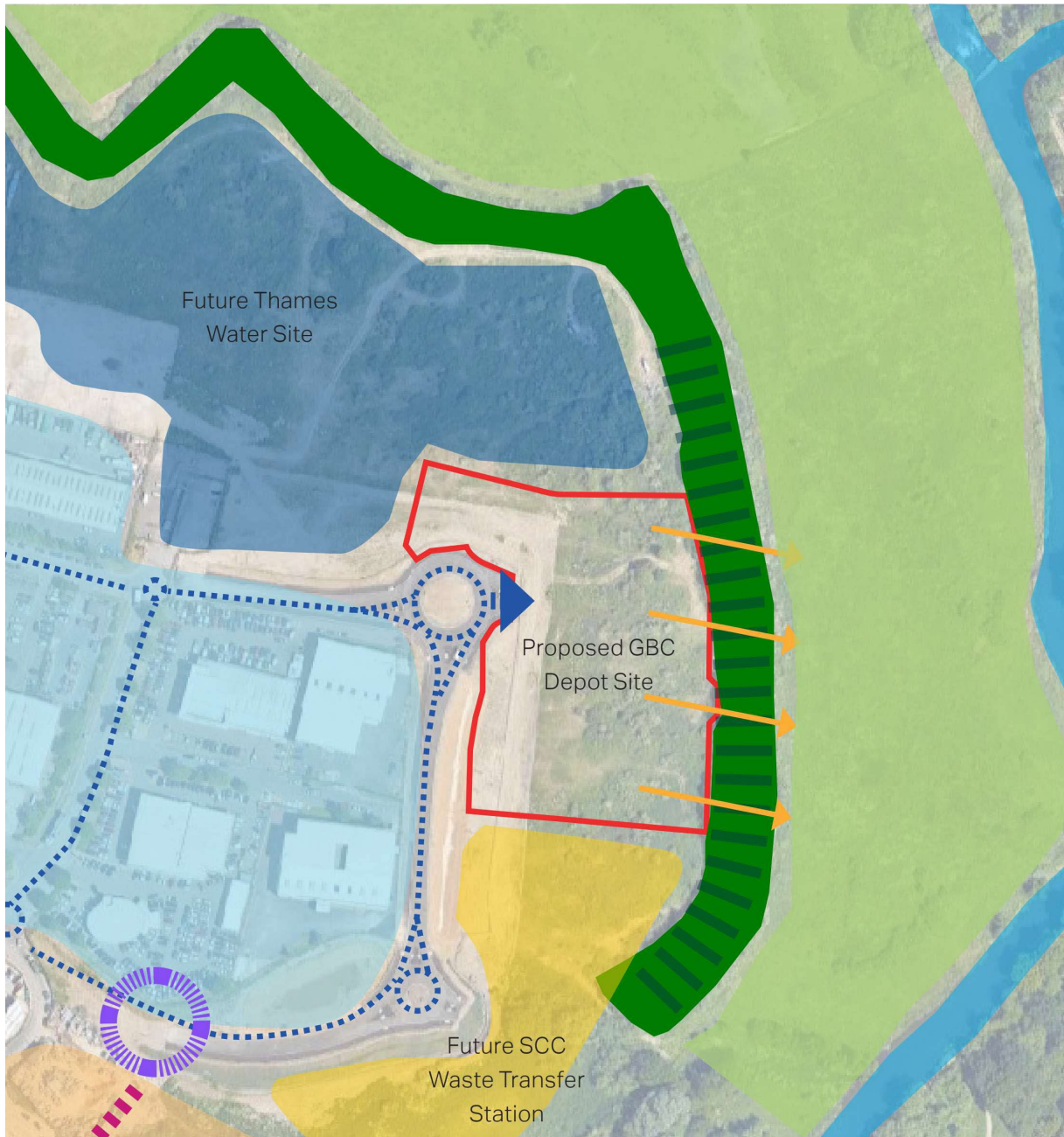
[Home](#)



[Previous](#)

[Next](#)

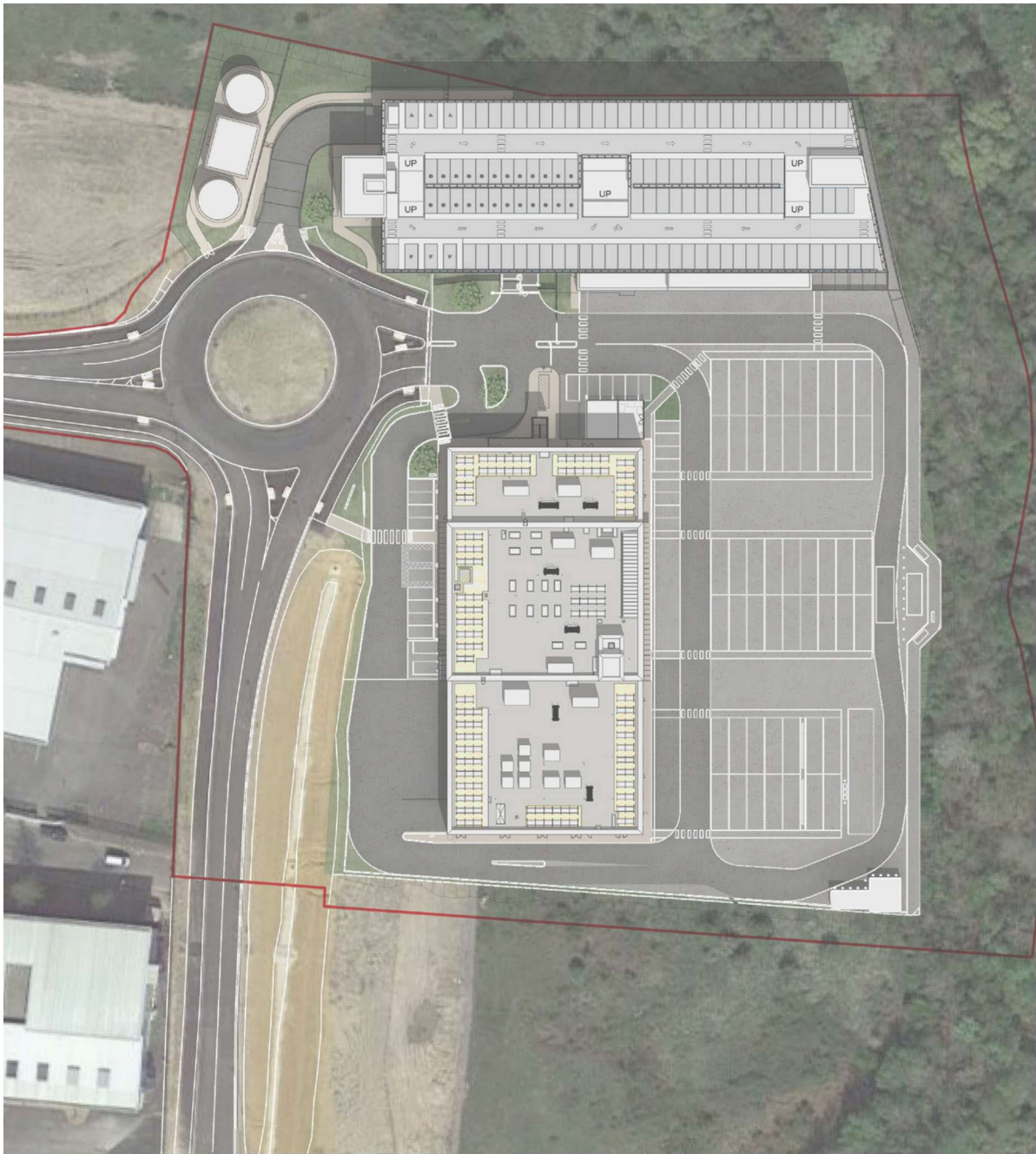
[Home](#)



[Previous](#)

[Next](#)

[Home](#)



[Previous](#)

[Next](#)

[Home](#)





[Previous](#)

[Next](#)

[Home](#)



[Previous](#)

[Next](#)

[Home](#)



[Previous](#)

[Next](#)

[Home](#)

This page is intentionally left blank

**21/P/02036**

**Land adjacent to  
12 Oak Hill  
Wood Street Village  
Guildford**

[Previous](#)

[Next](#)

[Home](#)

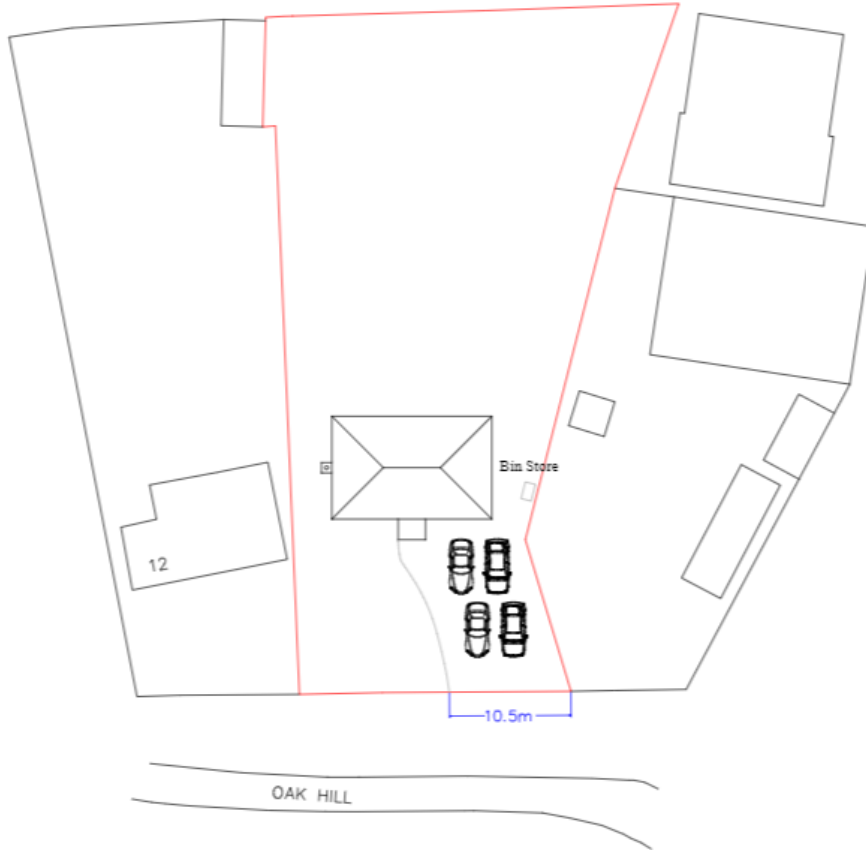


Location plan

[Previous](#)

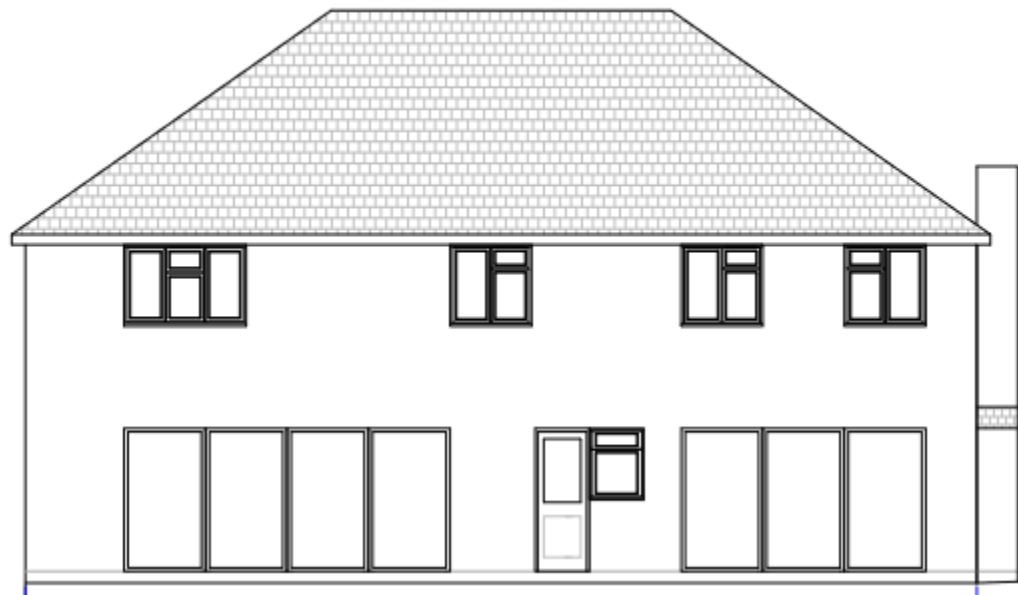
[Next](#)

[Home](#)





Front Elevation



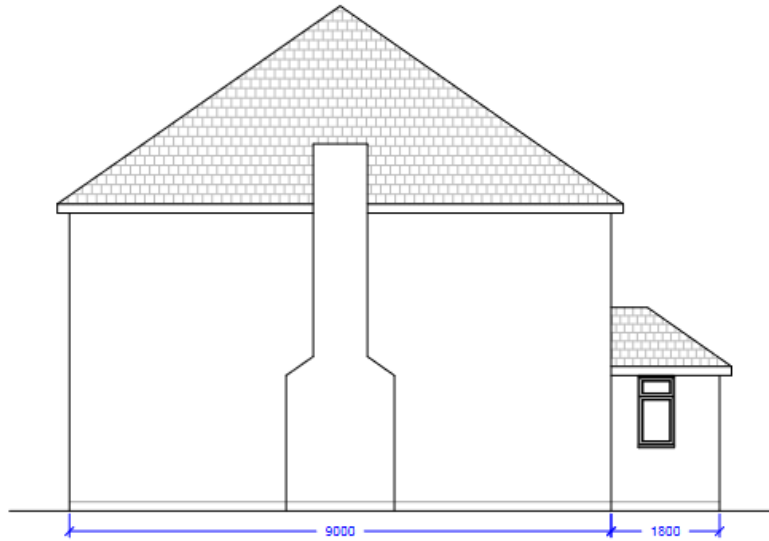
Proposed front and rear elevations

[Previous](#)

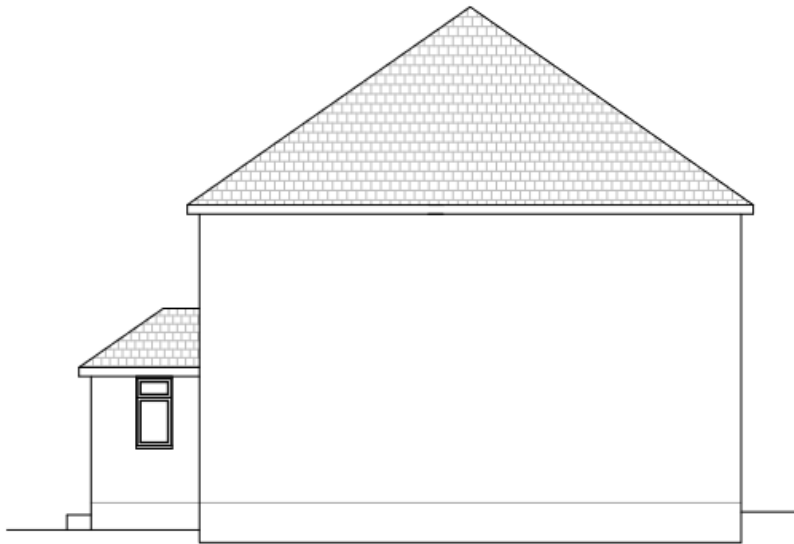
[Next](#)

[Home](#)





Side Elevation



Alternate Side Elevation

Proposed side elevations

[Previous](#)

[Next](#)

[Home](#)



[Previous](#)

[Next](#)

[Home](#)



**T1** Tree identifier  
**B1** British standard Tree category

○ Category 'B' Tree Canopy shown N E S W  
 ○ Category 'C' Tree Canopy shown N E S W

---

Tree Survey Plan  
 TSP

1234567890  
 1234567890

June 2022

SMW/10 OakHill /TSP/001

This drawing and design is copyright and cannot be reproduced in whole or in part without the written consent of the author. Distribution and use of this drawing is the sole responsibility of the author.

[Previous](#)

[Next](#)

[Home](#)



- T1  
B1 Tree identifier  
British standard  
Tree category
- Category 'B' Tree  
Canopy shown  
N E S W
- Category 'C' Tree  
Canopy shown  
N E S W
- Tree to be removed
- Root Protection area  
(RPA)
- Daylight shadow

- Protective Barrier  
STP
- C.E.Z.  
Construction exclusion zone
- Ground Protection  
Wood Chip

Site Visit: The Consultant  
 12 Oak Hill, Wood Street Village,  
 Guildford, Surrey, GU1 3ER

Mr & Mrs McShane

Tree Protection Plan  
 TTP

12 Oak Hill, Wood Street Village,  
 Guildford, Surrey, GU1 3ER

June 2022

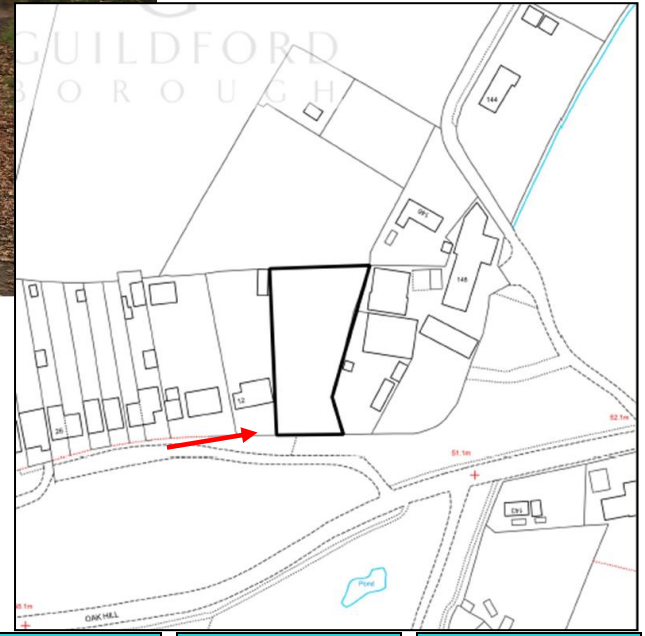
SMW/10 Oak Hill  
 /TTP/002

This drawing and design is copyright and shall not be reproduced in part or in whole without prior written consent. It is intended for use only for the project and site shown and shall not be used for any other purpose without the prior written consent of the consultant.

[Previous](#)

[Next](#)

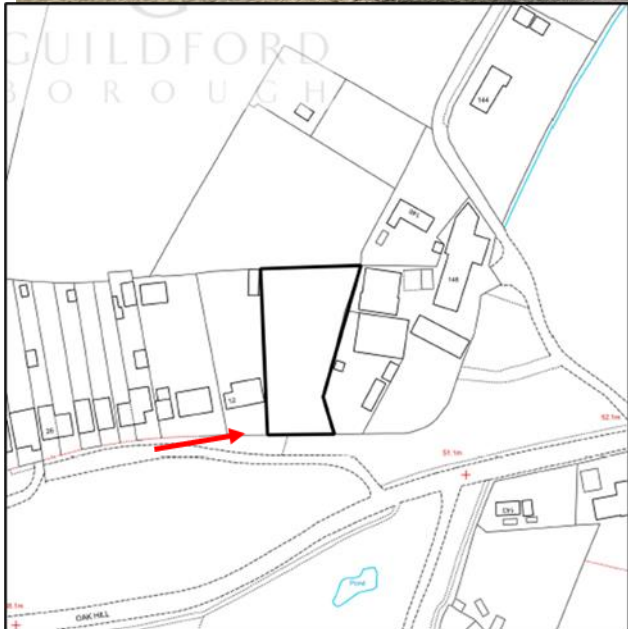
[Home](#)



[Previous](#)

[Next](#)

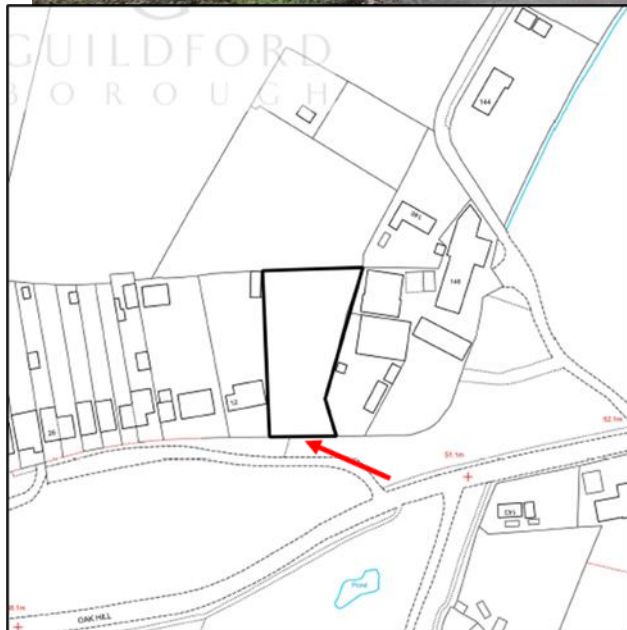
[Home](#)



[Previous](#)

[Next](#)

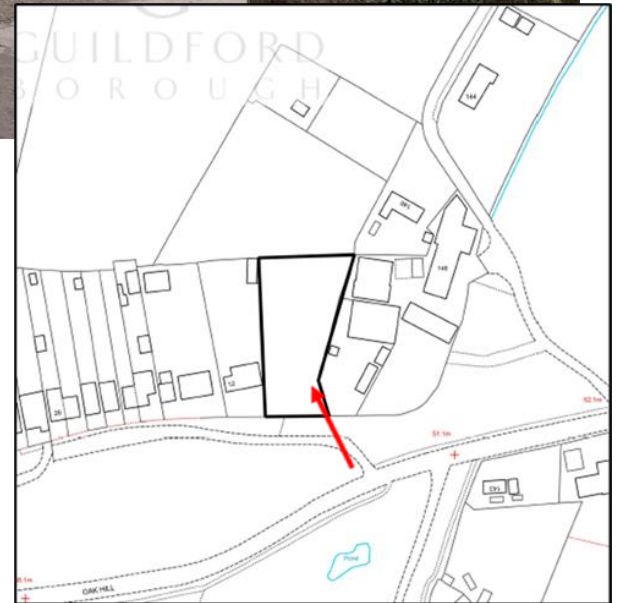
[Home](#)



[Previous](#)

[Next](#)

[Home](#)



[Previous](#)

[Next](#)

[Home](#)